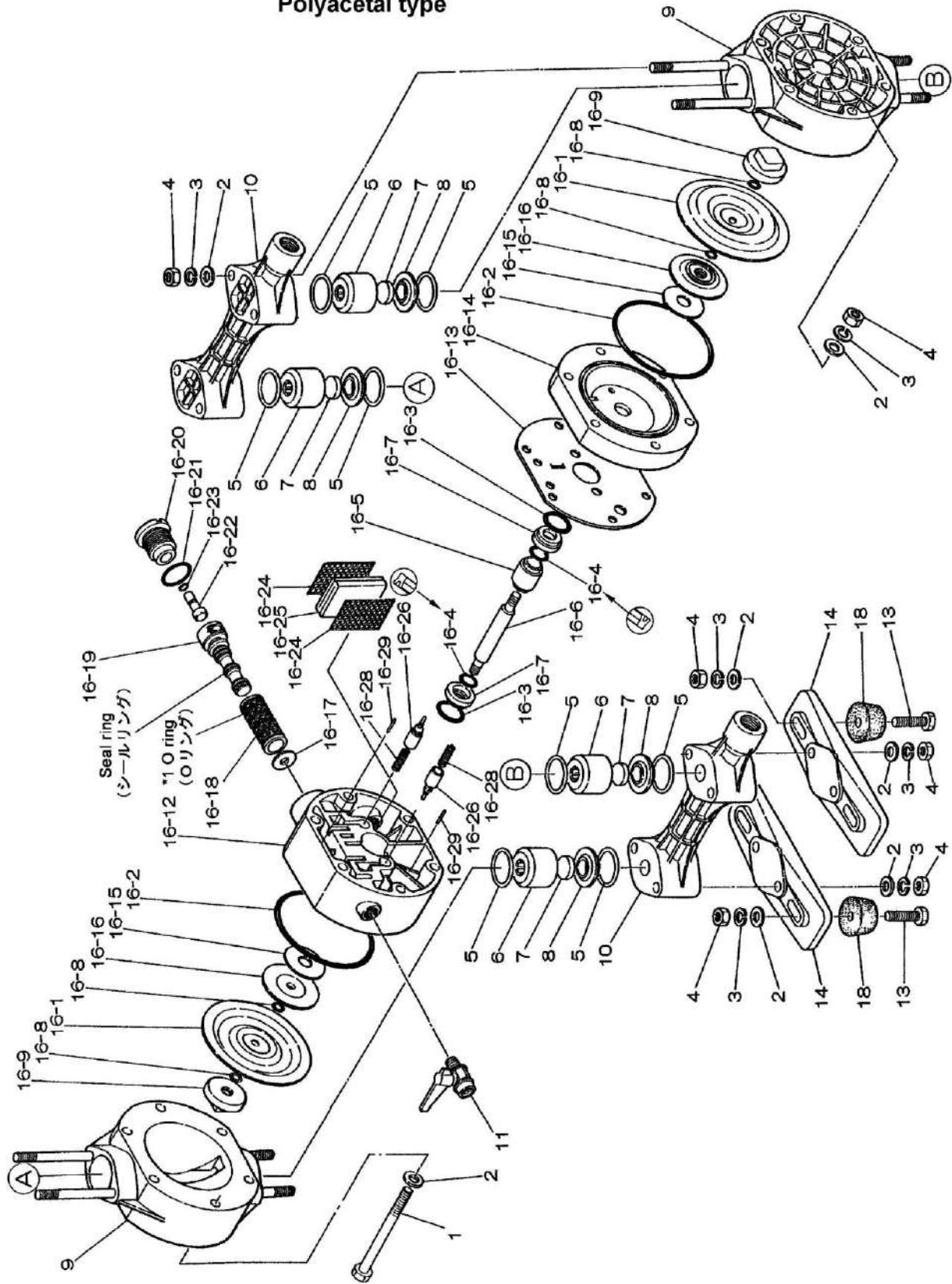


Fluid contact Portion : Polypropylene type
 Polyvinylidene fluoride type
 Polyacetal type



Ref.No.	Parts No.	Description	Parts Component	Remark	Order Qty
1	684310	BOLT	6		
2	631329	PLAIN WASHER	24		
3	681300	SPRING LOCK WASHER	18		
4	628012	NUT	18		
5	643027	O RING	8		
6	771341	VALVE STOPPER	4		
7	771340	FLAT VALVE	4		
8	771345	VALVE SEAT	4		
9	780119	OUT CHAMBER	2		
10	780026	MANIFOLD	2		
11	682771	BALL VALVE	1		
13	621153	BOLT	4		
14	771352	BASE	2		
16	802988	BODY ASSEMBLY	1		
18	770551	CUSHION	4		

NOTE 1)NDP-15B□H、B□S、F□H、F□S don't use No.16-8"O-ring"

■ Parts List

BODY ASSEMBLY

Ref.No.	Parts No.	Description	Parts Component	Remark	Order Qty
16-1	770933	DIAPHRAGM	2		
16-2	640144	O RING	2		
16-3	640020	O RING	2		
16-4	684284	PACKING	2		
16-5	771337	GUIDE	1		
16-6	710578	CENTER ROD	1		
16-7	771336	BUSHING	2		
16-8	643005	O RING	4		
16-9	770968	CENTER DISK	2		
16-12	780028	BODY A	1		
16-13	771347	GASKET	1		
16-14	780030	BODY B	1		
16-15	771342	CUSHION	2		
16-16	771344	CENTER DISK	2		
16-17,16-19	771483	CUSHION	2	This is available with a set as 802835 "C-SPOOL ASSY" (Parts Component 1). This is also available individually.	
16-18	683123	O RING	6		
	714683	SLEEVE	1	This is not available individually. Please order 804249 SLEEVE ASSY (Parts Component 1).	
16-19	683113	NUT	1	This is not available individually. Please order 802835 C-SPOOL ASSY (Parts Component 1).	
	711611	SPOOL	1		
	711612	C SPRING	2		
	771484	SEAL RING	5		
	771531	SPRING HOLDER	1		
	771627	BLOCK	1		
16-20	771695	CAP	1		
16-21	640022	O RING	1		
16-22	771350	RESET BUTTON	1		
16-23	640002	O RING	1		
16-24	771589	MESH	2		
16-25	771465	SILENCER	1		
16-26	832141	PILOT VALVE ASSEMBLY	2		
16-28	710577	SPRING	2		
16-29	632752	SPRING PIN	2		

NOTE 1)NDP-15B□H, B□S, F□H, F□S don't use No.16-8"O-ring"