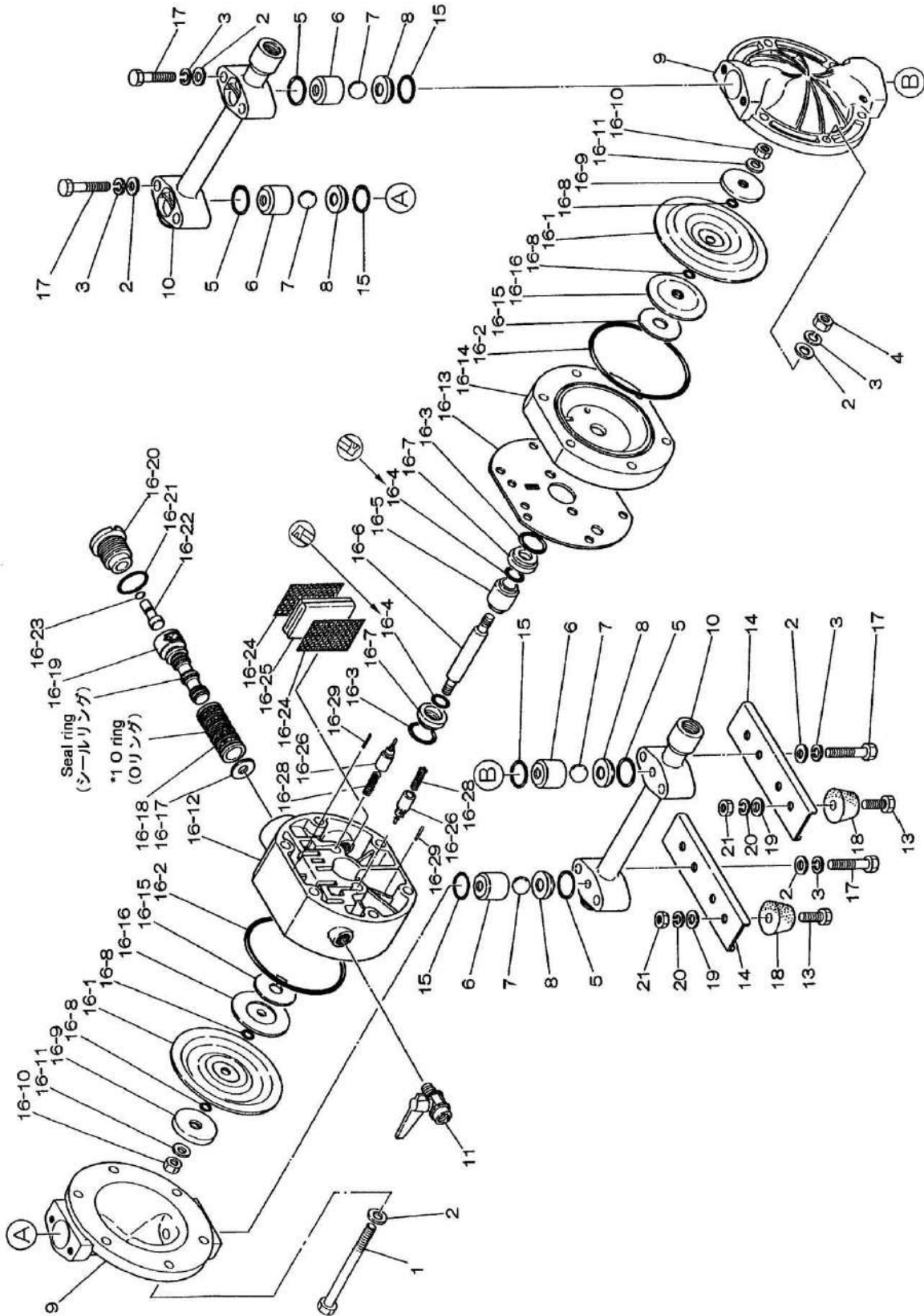


Fluid contact Portion : Aluminum type
 Stainless-steel type



Ref.No.	Parts No.	Description	Parts Component	Remark	Order Qty
1	683171	BOLT	6		
2	631329	PLAIN WASHER	20		
3	681300	SPRING LOCK WASHER	14		
4	628012	NUT	6		
5	684114	O RING	4		
6	771523	VALVE STOPPER	4		
7	773169	BALL	4		
8	711227	VALVE SEAT	4		
9	711226	OUT CHAMBER	2		
10	643017	O RING	2	This is not available individually. Please order 802707 MANIFOLD ASSY (Parts Component 2).	
	711513	CAP	2		
	711514	MANIFOLD	2		
11	682771	BALL VALVE	1		
13	621102	BOLT	4		
14	711405	BASE	2		
15	684113	O RING	4		
16	803502	BODY ASSEMBLY	1		
17	682727	BOLT	8		
18	771123	CUSHION	4		
19	631328	PLAIN WASHER	4		
20	681855	SPRING LOCK WASHER	4		
21	628010	NUT	4		

NOTE 1)NDP-15B□H、B□S don't use No.16-8"O-ring"

■ Parts List

BODY ASSEMBLY

Ref.No.	Parts No.	Description	Parts Component	Remark	Order Qty
16-1	771972	DIAPHRAGM	2		
16-2	640144	O RING	2		
16-3	640020	O RING	2		
16-4	684284	PACKING	2		
16-5	771337	GUIDE	1		
16-6	710578	CENTER ROD	1		
16-7	771336	BUSHING	2		
16-9	708770	CENTER DISK	2		
16-10	681849	NUT	2		
16-11	684916	CONED DISK SPRING	2		
16-12	780028	BODY A	1		
16-13	771347	GASKET	1		
16-14	780030	BODY B	1		
16-15	771342	CUSHION	2		
16-16	771344	CENTER DISK	2		
16-17,16-19	771483	CUSHION	2	This is available with a set as 802835 "C-SPOOL ASSY" (Parts Component 1). This is also available individually.	
16-18	683123	O RING	6		
	714683	SLEEVE	1	This is not available individually. Please order 804249 SLEEVE ASSY (Parts Component 1).	
16-19	683113	NUT	1	This is not available individually. Please order 802835 C-SPOOL ASSY (Parts Component 1).	
	711611	SPOOL	1		
	711612	C SPRING	2		
	771484	SEAL RING	5		
	771531	SPRING HOLDER	1		
	771627	BLOCK	1		
16-20	771695	CAP	1		
16-21	640022	O RING	1		
16-22	771350	RESET BUTTON	1		
16-23	640002	O RING	1		
16-24	771589	MESH	2		
16-25	771465	SILENCER	1		
16-26	832141	PILOT VALVE ASSEMBLY	2		
16-28	710577	SPRING	2		
16-29	632752	SPRING PIN	2		

NOTE 1)NDP-15B□H, B□S don't use No.16-8"O-ring"