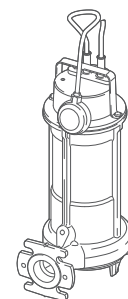
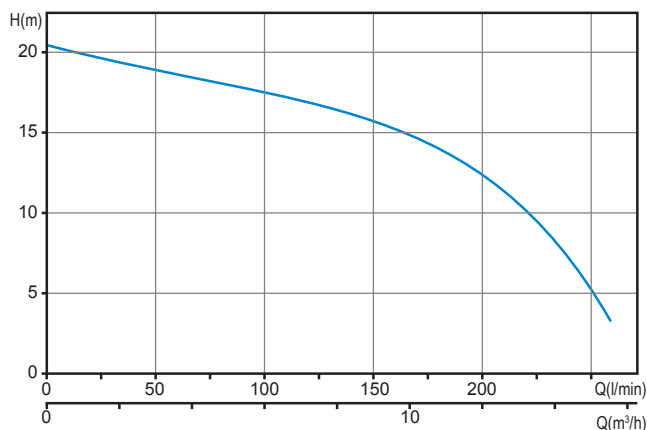


## Pumps with vortex impeller

### Operating ranges



### Range characteristics

Motor power	0.9 kW
Poles	2
Insulation class	F
Degree of protection	IP68
Discharge	GAS 1 1/2" DN32 horizontal
Free passage	-
Max flow rate	4.3 l/s (258 l/min)
Max head	20.4 m

### Motor

Dry motor with thermal protections.

### Cable

H07RN-F 4G1 - 5 m cable length. Optional 10 m cable length.

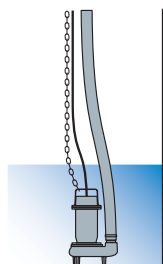
### Mechanical seals

One silicon carbide mechanical seal (SiC) and one lip seal (AL)

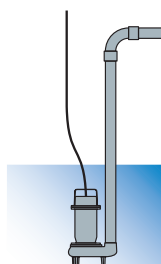
### Applications

Suitable for lifting soiled wastewaters containing filaments or fibres, and unstrained household sewage in general.

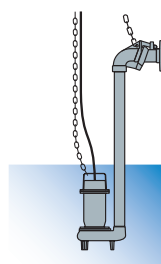
### Installations



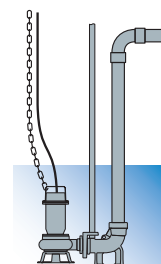
FREE



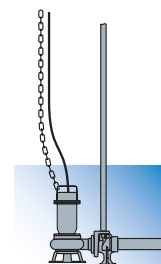
FIXED



with EXTERNAL COUPLER



with BASE COUPLING FOOT



### Versions

Electrical variants	TCDT, TCDGT (single-phase models) TR, TRG (three-phase models)
Cooling system	N
Mechanical seals	SICM

### Operating specifications

Max operating temperature	40 °C
PH of treated fluid	6 ÷ 14
Viscosity of treated fluid	1 mm²/s
Maximum immersion depth	20 m
Density of treated fluid	1 Kg/dm³
Acoustic pressure max	<70dB
Max starts per hour	30

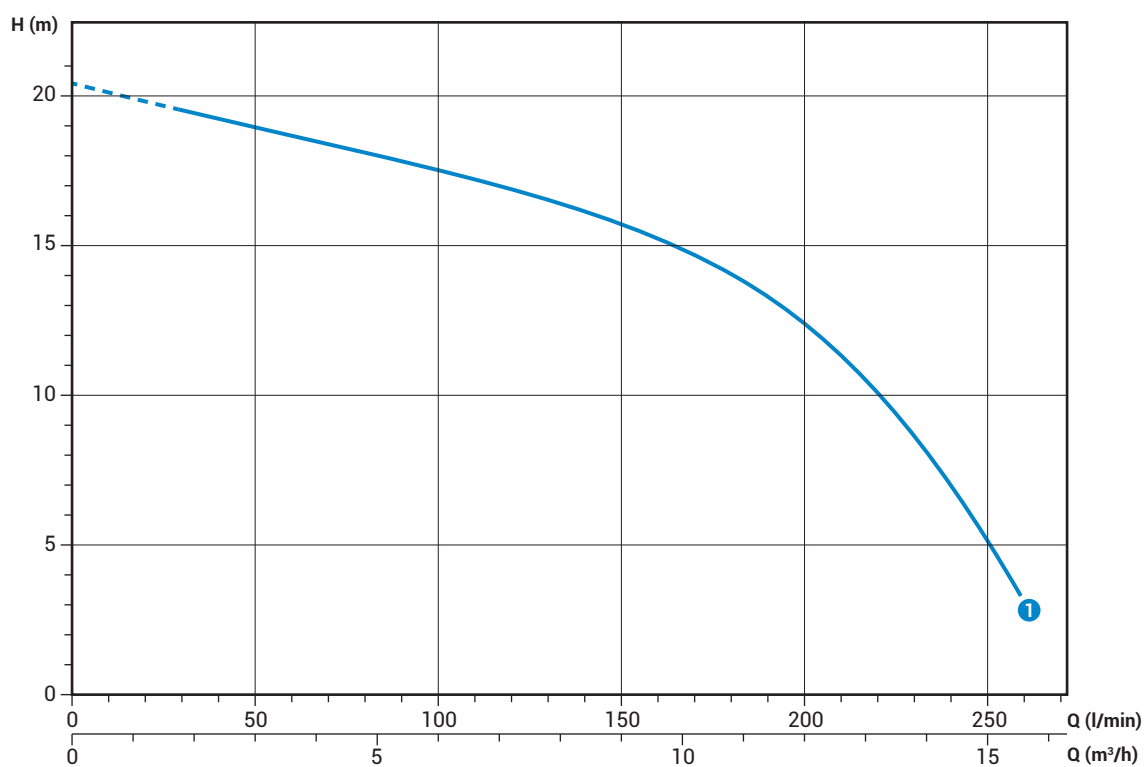
### Construction materials

Case	Cast iron EN-GJL 250
Hydraulic parts	Cast iron EN-GJL 250
Impeller	Cast iron EN-GJL 250
Nuts and bolts	Stainless steel - Class A2-70
Standard gasket	Rubber - NBR
Shaft	Stainless steel - AISI 420
Grinding system	Chromium steel
Paint type	Ecological bicomponent epoxy (~ 80 µm)

## GRS 2/G40H

### Performances

	l/s	0	1	2	3	4
	l/min	0	60	120	180	240
	m <sup>3</sup> /h	0	3.6	7.2	10.8	14.4
① GRS 100/2/G40H A0CM(T)5		20.4	18.7	16.8	14.0	7.0



Characteristic curves according to UNI/EN ISO 9906

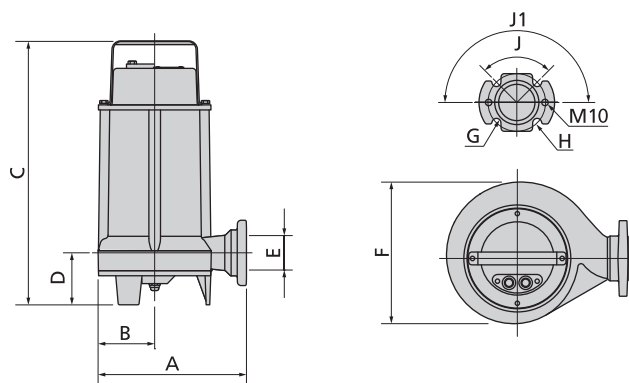
### Technical data

	V	Phases	P1 (kW)	P2 (kW)	A	Rpm	Start	Cable	Ø	Free passage
① GRS 100/2/G40H A0CM5	230	1	-	0.9	6.6	2900	Dir	4G1	G 1½" - DN32	-

	V	Phases	P1 (kW)	P2 (kW)	A	Rpm	Start	Cable	Ø	Free passage
① GRS 100/2/G40H A0CT5	400	3	-	0.9	2.3	2900	Dir	4G1	G 1½" - DN32	-

## Overall dimensions and weights

### Models with vertical discharge



	A	B	C	D	E	F	G	H	J	J1	kg
GRS 100/2/G40H A0CM(T)5	205	80	365	70	G 1½" DN32	165	14	90	90°	180°	21

Dimensions in mm

### Packaging dimension



	X	Y	Z
GRS 100/2/G40H A0CM(T)5	225	385	245

Dimensions in mm